

## ST GEORGE'S CHAPEL

(Closed on Sundays except for services)

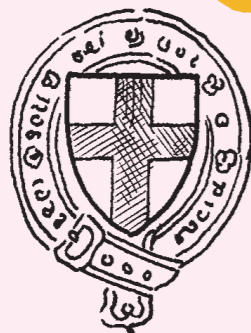


This Chapel was built over 500 years ago and is the place of worship for the **Order of the Garter**, a band of knights that began at Windsor more than 660 years ago.

Follow the visitor route until you reach the Quire. Look up to see the banners of the present Knights of the Garter pictured here.



They show their **coats of arms**, a type of badge that knights used to wear in battle. When wearing full armour, each knight had to have a different badge, so that friends and enemies could tell who he was.



Walk on and find the painting of King Edward III.

In 1348, he chose 24 of his bravest knights to be the first members of the Order of the Garter.



The king wears the crown of England, but on his sword are the crowns of two countries he also wanted to rule. Can you work out which they were:

F \_ A \_ \_ E  
\_ C \_ T \_ \_ N D



What is hanging on the wall next to his painting? It is 2m and was probably used with two hands by King Edward III in battle.

## GUARDING THE CASTLE

Near the visitor exit gate you will see the Guard Room. Soldiers like the one below guard the Castle today and the Guard Room is where they live when on duty.

What colour uniform is the guard wearing today?

Draw a picture of the guardsman here:



We hope you enjoyed your visit. Remember to look for more castle defences as you go through the exit gate.



# LEARNING ABOUT CASTLES



Windsor Castle is the oldest and largest castle, that people live in, anywhere in the world. It is also the resting place of 11 former British monarchs.



Follow the trail to find out more and ask the Wardens in the Castle and Stewards in St George's Chapel if you need help.

Built over 900 years ago for William the Conqueror, the Castle was first built in wood and then rebuilt in stone a hundred years later. With thick walls and strong towers to keep out enemies, it has always been a safe place for kings and queens to live.



## CASTLE HILL

Is The King here today?

As you walk up the hill, look at the Round Tower and see which flag is flying.



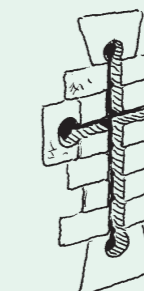
**The Royal Standard** means The King is here today.



**The Union Flag** means The King is not here today.



ARROW LOOPS



These windows kept the archers safe from enemy arrows. When you turn the corner at the top of the hill, the openings are much wider on the inside. Why is this?

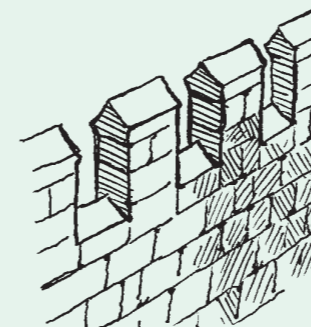
TOWERS:  SQUARE  ROUND

Is this Castle easy to defend?

Castles long ago had lots of special features that made it difficult for people to break in.

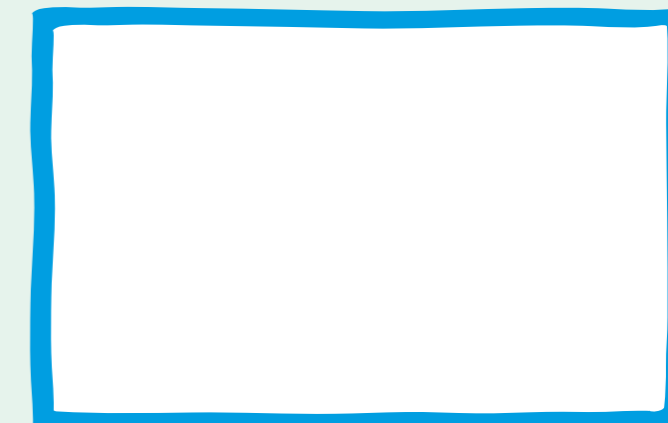
Tick these off when you see them:

BATTLEMENTS



Archers fired arrows through the opening then hid behind the upright section.

Draw a tower here:



ANSWERS Castle Hill: arrow loops were wide on the inside to give the archer a wider field of fire; Middle Ward: the Castle and the Round Tower are both built on a hill. All the items listed would have been thrown or fired at the enemy; North Terrace: (A) Trebuchet; (B) Bellry; (C) Battering ram; Quadrangle: the tournament was called jousting; St George's Chapel: the countries were France and Scotland, and the king's sword is next to his painting.



To learn more about Windsor Castle as a fortress, download the information sheet from the Learning Resources section of our website [www.rct.uk/learning](http://www.rct.uk/learning). Discover further learning opportunities there, and also at [www.stgeorges-windsor.org](http://www.stgeorges-windsor.org)

Edward III image – © The Dean and Canons of Windsor  
All other images: Royal Collection Trust / © His Majesty King Charles III 2022  
Photographers and illustrators: Windsor Castle, Quadrangle, St George's Chapel images, Will Pryce; motte and bailey illustration, Bob Marshall; St George's Hall image, Mark Fiennes; guardsman image, Peter Packer.



## MIDDLE WARD

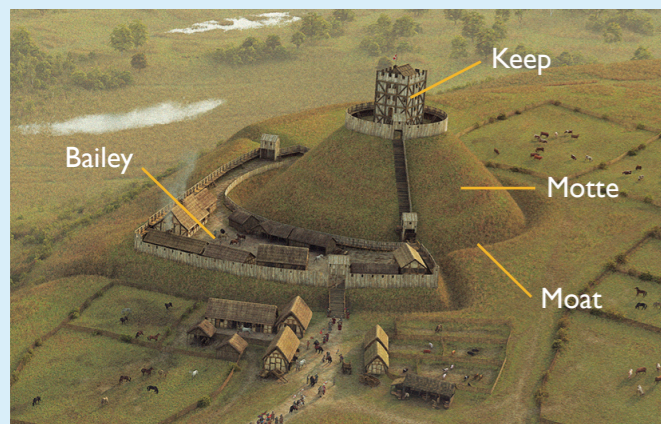


Is this Castle built on a hill?

Look up at the Round Tower to find out.



A hill was excellent because the enemy would find it difficult to fight going uphill. The Round Tower is the **keep** of the Castle, the highest and safest place to be. The hill it stands on is the **motte** made from the soil that was dug out from the ditch below. The **bailey** is a flat area with buildings for people to live in. Windsor Castle is a motte and bailey castle, but has **two** baileys because the site is long and narrow. Its ditch or **moat** is dry because rain water drains through the chalky soil.



Tick the things below that soldiers would have thrown or fired down onto enemy attackers:

- HOT WATER
- BOILING OIL
- FLAMING ARROWS
- ROCKS
- SIZZLING PIG FAT



On leaving Middle Ward, you can visit these next areas in whatever order you wish, although you will probably visit them in the order opposite.

## NORTH TERRACE



Look over the wall, but be careful. See how steep the cliff is here – much too steep to climb.



Can you see the River Thames?  Yes  No

It is not easy to see today because of the buildings, but when the Castle was first built soldiers could see the enemy moving along the river and prepare for their attack.

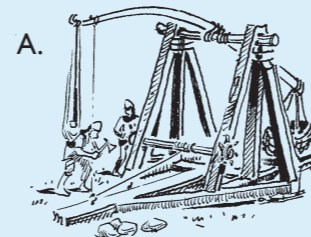
Imagine you are the enemy planning to take over the Castle long ago. Here are pieces of equipment you will need, but the descriptions have got mixed up.

Draw a line to join up each picture with the correct details.



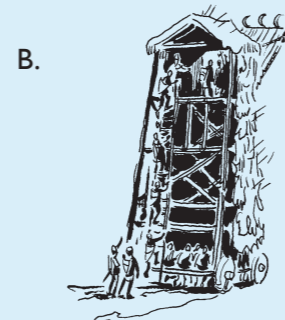
### BATTERING RAM

You will use this enormous log hanging on chains to smash through walls and doors.



### TREBUCHET (say it treb-oo-shay)

With this big catapult you will shoot huge rocks at the Castle walls.



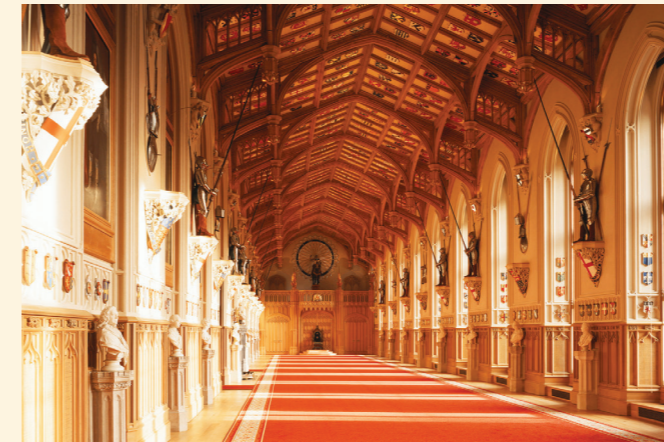
### BELFRY

Your soldiers will bring this siege tower close to the walls, climb the steps inside and storm across the platform at the top.



## STATE APARTMENTS

The State Apartments are the magnificent rooms The King uses when he welcomes his guests to Windsor Castle. In St George's Hall, look at the **coats of arms** of the **Knights of the Garter**, of which there are more than 1,000 in all. Find out more about the Garter Knights when you visit St George's Chapel.



## QUADRANGLE



This grassy area is where kings and queens long ago held colourful festivals and tournaments. A special type of tournament involved two knights on horseback charging towards each other carrying heavy lances and trying to knock each other off their horses. This is how they practised their fighting skills.

Unscramble these letters to find out what it was called:

J I N G O T S U



## NORMAN GATEWAY



Stand close to the gateway, but please beware of traffic. Pretend you are in charge of guarding this gateway long ago. The King of France is in prison in the tower and his friends are trying to set him free.



Check these gate defences:

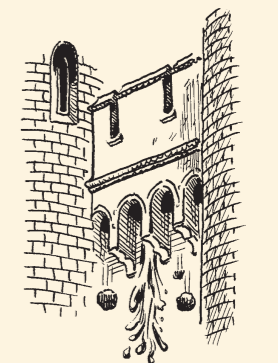
PORTCULLIS



Look up and you will find this ready to be lowered if enemies come near. The iron spikes have now been cut off to make it safe.

MURDER HOLES

Can you see some stonework that overhangs the outside wall of the gateway? Your guards must drop boiling water and rocks through the holes onto the enemy.



HEAVY WOODEN DOORS

Your soldiers will slam these shut, lock them and put a drawbar across to make sure no one gets through. Long ago, the doors were taller.

