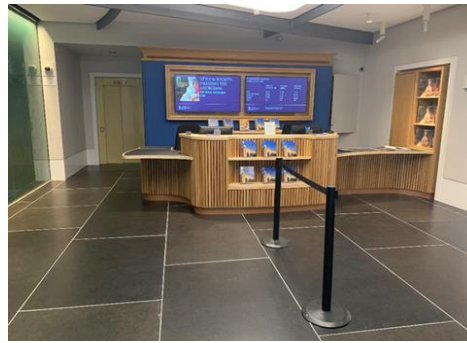


The King's Gallery Guide for Autistic Visitors

The King's Gallery entrance

The entrance to The King's Gallery is on Horse Wynd directly opposite the Scottish Parliament building.



The entrance doors are glass, with a glass strip in the pavement in front of the doors. The area inside the doors can be very busy and crowded. If you wish to purchase a ticket upon arrival, please join the queue for the next available till.

Tickets

The different ticket options available for The King's Gallery are:

Adults	£10.00
Young Person (18-24)	£6.50
Child (5-17)	£5.00
Disabled	£5.00
Access Companion	Free
Under 5	Free
£1 tickets for those on Universal Credit and other named benefits.	Read more about £1 tickets

Bag checks



Prior to entering the exhibition, your belongings will be subject to a bag check by a member of staff. More information about bag checks can be found [here](#).

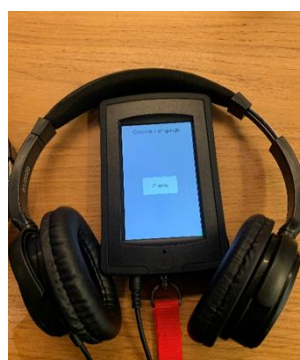
Entering the exhibition

To enter the exhibition, go through the glass doors to the left of the ticket desk. The doors have large, moulded brass handles, with decorative figures, which are very tactile. The doors will also open if you push the glass.



Multimedia Guide and Cloakroom

Complementary multimedia guides are available from the desk on the right as you enter the Gallery.



The multimedia guide is a touch screen operated device which tells you about the exhibition. The Warden at the desk will show you how to use it. It has some background music, videos and interactive features. You can stop and restart the multimedia guide at any point. If you listen to all of the tour it will take you about 60 minutes. The multimedia guide is used with headphones. You are welcome to use your own wired headphones if preferred.

Large print labels and Plain English Script are also available.

Cloakroom

Cloakroom facilities are available at the multimedia guide desk. Large rucksacks and suitcases must be placed in the cloakroom. If you hand in baggage, the Warden behind the desk will give you a ticket. Give this back to them at the end of your visit, and they will return your belongings to you.

Toilet facilities

There are two toilet facilities available through the blue door in the foyer of The King's Gallery- there is one single unisex cubicle and one accessible toilet.



Baby changing facilities are available in the Café at the Palace. The nearest Changing Places toilet is located in the Scottish Parliament Building directly across the road.

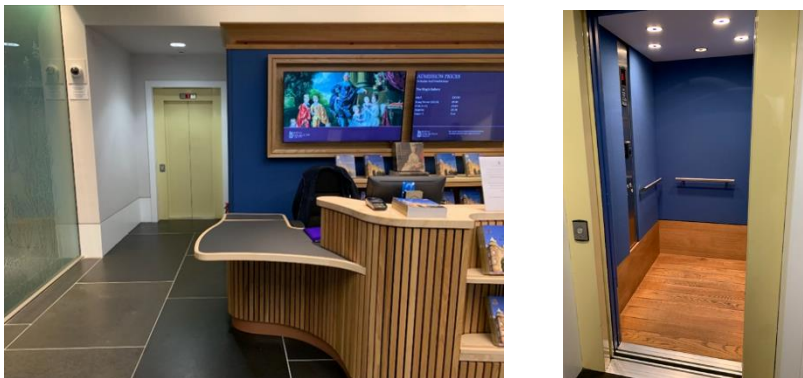
Access to exhibition

The exhibition is introduced on the ground floor and then continues upstairs. A lift is available back out the glass doors, to the left of the ticket desk.



Lift access

The lift is located to the left of the ticket desk in the entrance foyer.



The main exhibition floor

A lot of the décor of the main exhibition floor is wooden, with ceiling spotlights causing patterns and shadow.

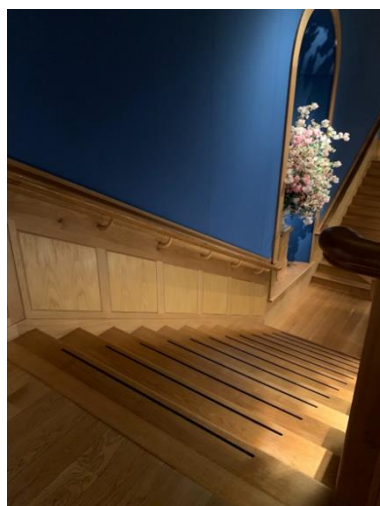


The exhibition is displayed in the main open space around the staircase banister and is continued into the back room.



Stairs and lift to exit exhibition

At the end of the exhibition, there is the option to exit via a staircase or there is also the lift available in the middle of the Gallery.



The Palace Shop



The shop can be found to the right of the ticket desk. It is a brightly lit environment and can get very busy. An online shop is also available here: www.royalcollectionshop.co.uk.

When exiting the shop into the Mews Courtyard, you cross a stripey mat on the floor.



Café at the Palace



The entrance to the Café is opposite the exit from the shop, across a courtyard. Seating is available in three spaces – outside, inside in front of the service area, and in the back, behind the service area. Part of the Café is covered with a glass roof so the lighting can be very bright.

The seating area in the back of the Café is generally quieter.



It can be a very difficult sensory experience with noise, light and strong smells. If you would like any assistance, carrying a tray, please do not hesitate to ask a member of staff.

Café toilet facilities

Toilet facilities are located in the front room of the Café. There are noisy hand-driers directly underneath the mirrors in both the main and accessible toilets.



If you need any assistance during any stage of your visit, please do not hesitate to ask a member of staff who would be delighted to help.

We hope that you enjoy your visit to The King's Gallery!